

Subject: 2022 Newsletter #1



Dear Reader,

Welcome to our first newsletter of 2022. We hope your year start has been positive.

In this issue:

- invite to our [Quiz and Chips](#) social and fundraising event
- invite to the Norwich University of the Arts [exhibition private view](#)
- update on roof repair works progress at [St Michael Coslany Church](#)
- could you [become our next Treasurer?](#)
- meet our [new Operations Manager](#), Sandra Martins



QUIZ & FISH AND CHIPS

"lovely!"

NORWICH HISTORIC CHURCHES TRUST

QUIZ & CHIPS

12 Mar 22 | 19:00

Quiz | Fish and Chips | V/Ve options | Raffle | Donations Bar | Dinner Included

£12.50 General Admission
£10 Friends of NHCT

To find out more or book:
nhct-norwich.org/events/22quiz/
01603 600513 | info@norwich-churches.org

Follow us

After such a long break, we are very excited to resume our programme of social and fundraising events. To kick it off, is our well-enjoyed Quiz & Chips. Yum!

Grab your friends and join us for a fun night of trivia, award-winning food and prizes!

Raffle prizes: could you help us by donating items for our raffle prizes? [Email us](#) if so!

Friends get a special price!

[Book Quiz & Fish and Chips](#)

[BECOME A FRIEND](#)

[Email this event to a Friend](#)

[Share on Facebook](#)

[Tweet](#)

PRIVATE VIEW INVITATION

You are cordially invited to the Private View of the NUA's Interior Design Course Exhibition, a partnership with Norwich Historic Churches Trust.

Every year we pose a challenge to the Norwich University of the Arts Interior Design Course Students, to imagine and devise a new use for one of our historic churches. The outcomes are astounding: this year we saw proposals to transform the space at St Margaret de Westwick Church into a boutique hotel, a yoga studio, a Film Museum and much more.

Join us to find out how this iconic church sparked creativity!

 Tuesday 22nd of February, 5-7pm

 St Martin at Palace Church, 15 St Martin at Palace Plain, Norwich NR3 1RW

[RSVP by 21st February](#)



NUA Interior Design Exhibition

We warmly invite you to the Private View of our BA (Hons) NUA Interior Design students' vision for one of Norwich's finest historic churches.

Tuesday 22 February, from 5 – 7pm

**The exhibition takes place at:
St Martin at Palace Church, St Martin at Palace Plain, Norwich, NR3 1RW**

Year 2 Interior Design students have been working with the Norwich Historic Churches Trust to explore ideas of re-use, conservation, and adaptation of the Grade II listed St Margaret's Church.

The exhibition will be open to the general public for three weeks

Thursday 24 February, 10am – 3pm

Tuesday 1 March, 10am – 3pm

Thursday 3 March, 10am – 3pm

Tuesday 8 March, 10am – 3pm

Thursday 10 March, 10am – 3pm

Please RSVP to interiordesign@nua.ac.uk by 21 February.

Norwich University of the Arts www.nua.ac.uk #WeAreNUA



A VERY EXPOSED ROOF!

St Michael Coslany Church

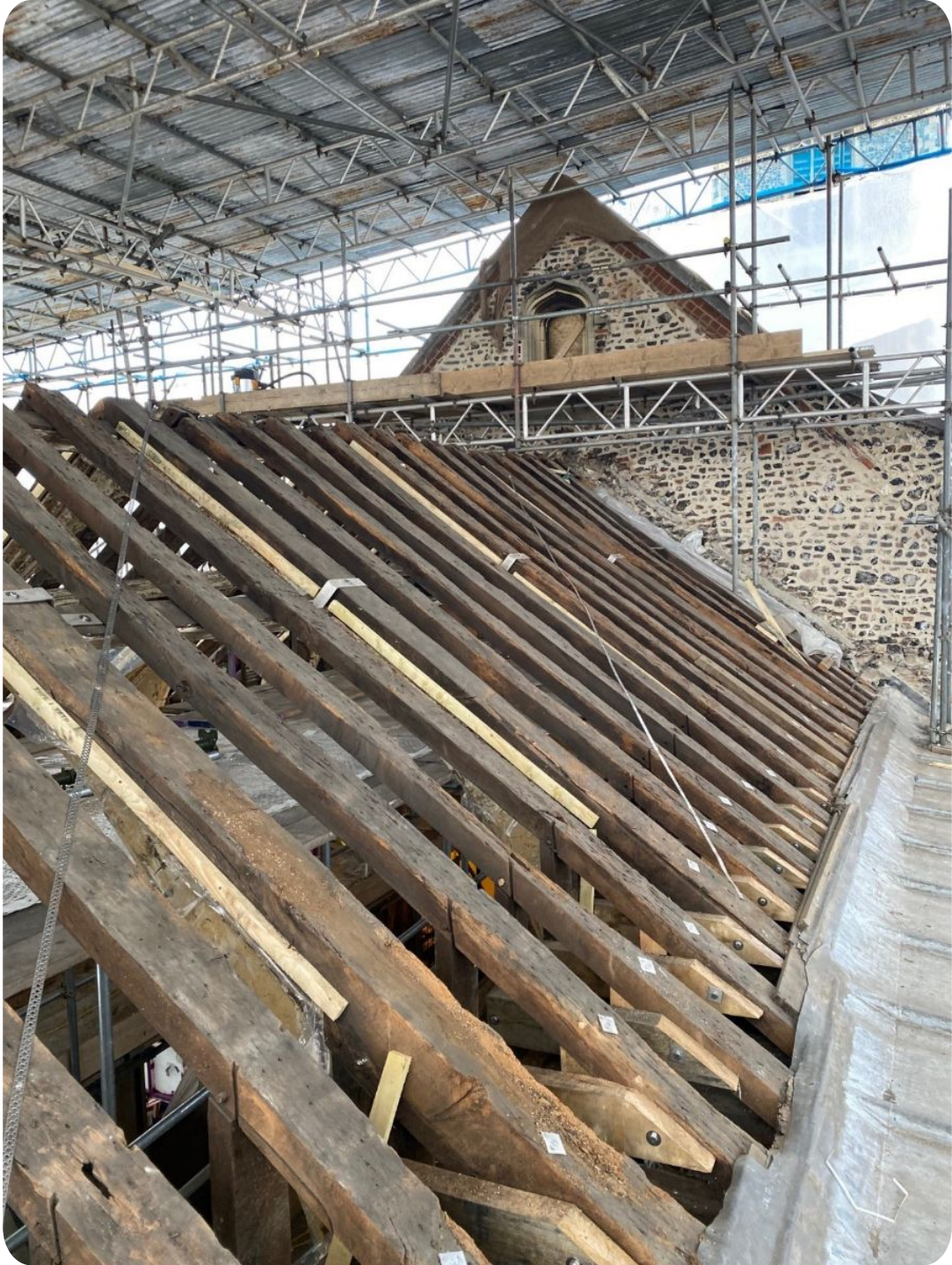
In 2021 a small section of plaster fell from the chancel roof at St Michael Coslany Church, home to the Oak Street Circus. The NHCT Surveyor of the Fabric Mark Wilson inspected, and unfortunately it became apparent that the roof timbers were suffering from rot and a woodworm infestation.

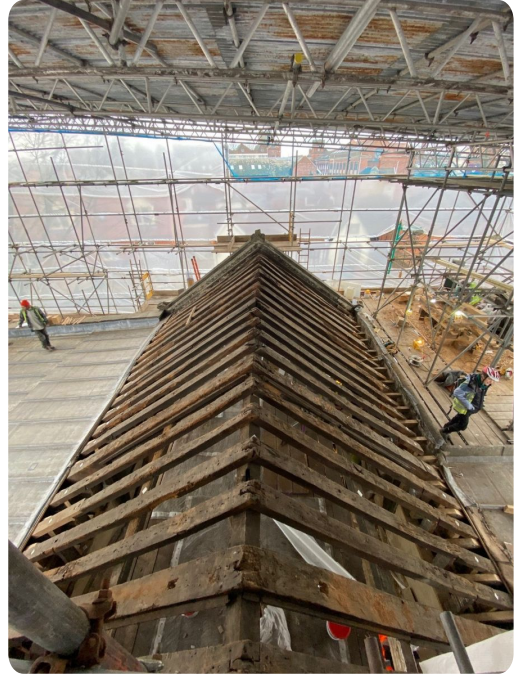
The Trust quickly erected a birdcage scaffolding and removed the internal plaster bays to allow for some air circulation and allow the timbers to dry out. With very generous grant funding from Historic England, the Freemans charity and Paul Basham Trust, we were able to go out to tender and start repair works in October 2021 for a project in excess of £200,000.00.

In the capable hands of Purcell Architects and with Eastern Foundry Lead as the main contractor, the repair works have progressed well throughout the winter and are due for completion in March 2022, an incredibly quick turnaround.

Works have included oak repair to the principle rafters, new ashlar posts and a new wallplates. Flintwork and masonry repairs have also been carried out to some of the fantastic flushwork. New guttering and drainage are also being installed along with repairing the stonework and re-leading the glazing to a window on the south side of the nave.







[Follow our updates on Instagram](#)


COULD YOU BE OUR TREASURER?


NHCT is seeking a Treasurer, someone who can be committed to the Trust and will value the importance of this vital role. A good aptitude for numbers and an interest in the charity sector are essential. The Treasurer oversees the Trust's finances in order to minimise risk whilst ensuring the charitable

objectives are still being met.
Could this be you or someone you know?




[Find out more or apply to the Treasurer position](#)

 [Email this to a Friend](#)

 [Share on Facebook](#)

 [Tweet](#)

 [Share on Linked In](#)

MEET SANDRA!

Hi everyone! My name is Sandra, and I'm very excited to be a part of the NHCT team. My background includes day-to-day management and working with communities as Library Manager of the Norfolk and Norwich Millennium Library, and I have worked with over 15 cultural organisations around Europe. I started working in heritage in 2016 when I joined the Norfolk Museums Service, and I hold a post-graduate degree in Cultural



Heritage and Museum Studies, so as you can imagine I love old buildings!

I joined NHCT in October 2021, where I am responsible for running the day-to-day operations of the Trust, liaising with tenants, organising events and engaging with communities. A huge thank you to my predecessor Rachel Kidd, for her dedication to the Trust and all her support during the handover.

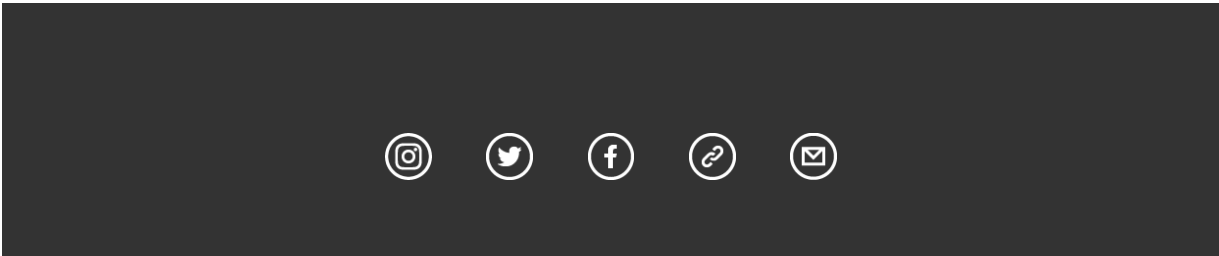
I cannot wait to meet all our stakeholders, make wonderful things happen, and develop a sense of community around our unique historic churches.

Sandra Martins, Operations Manager at NHCT



[Donate](#)

[BECOME A FRIEND](#)



Copyright © 2022 Norwich Historic Churches Trust, All rights reserved.
We like to keep in touch with people who have opted to receive information from NHCT.

Our mailing address is:
Norwich Historic Churches Trust
St Martin at Palace Church
15 St Martin at Palace Plain
Norwich, Norfolk NR3 1RW
United Kingdom

[Add us to your address book](#)

Want to change how you receive these emails?
[You can update your preferences or unsubscribe from this list.](#)

